

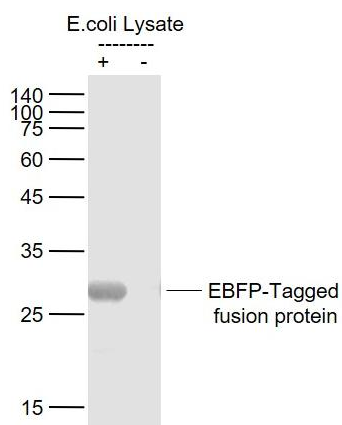
Catalog No. BN41436M

Mouse Anti-EBFP Monoclonal Antibody

DATASHEET

<p>Host:Mouse</p> <p>Target Protein:EBFP</p> <p>IR:Immunogen Range:</p> <p>Clonality:Monoclonal</p> <p>Isotype:IgG</p> <p>Entrez Gene:N/A</p> <p>Swiss Prot:N/A</p> <p>Source:Recombinant EBFP protein:</p> <p>Purification:affinity purified by Protein G</p> <p>Storage:0.01M TBS(pH7.4) with 1% BSA, 0.03% Proclin300 and 50% Glycerol. Shipped at 4 °C. Store at -20 °C for one year. Avoid repeated freeze/thaw cycles.</p> <p>Background:Enhanced Blue Fluorescent Protein (EBFP) emits a strong blue fluorescence. EBFP can be used as protein "tags" to study the sub-cellular localization of proteins and/or their translocation upon stimulation or as markers for transfection in transient and stable expression systems.</p>	<p>Concentration:1mg/ml</p> <p>Applications:WB(1:1000-5000) ELISA(1:5000-10000)</p> <p>Cross Reactive Species:fusion protein.</p> <p>For research use only. Not intended for diagnostic or therapeutic use.</p>
---	--

VALIDATION IMAGES



Sample:

Lane 1: EBFP-Tagged fusion protein (full length) Overexpression E.coli Lysate at 4 ug

Lane 2: Control (-) E.coli Lysate at 4 ug

Primary: Anti- EBFP-Tag at 1/1000 dilution

Secondary: IRDye800CW Goat Anti-Mouse IgG at 1/20000 dilution

Predicted band size: 26 kD

Observed band size: 26 kD