

Catalog No. BN41942R

Rabbit Anti-ACP5 Polyclonal Antibody

## DATASHEET

**Host:**Rabbit**Target Protein:**ACP5**IR:**Immunogen Range:101-200/325**Clonality:**Polyclonal**Isotype:**IgG**Entrez Gene:**[54](#)**Swiss Prot:**[P13686](#)**Source:**KLH conjugated synthetic peptide derived from human TRAP/Tartrate Resistant Acid Phosphatase:101-200/325**Purification:**affinity purified by Protein A**Storage:**0.01M TBS(pH7.4) with 1% BSA, 0.03% Proclin300 and 50% Glycerol. Shipped at 4°C. Store at -20 °C for one year. Avoid repeated freeze/thaw cycles.

**Background:**Tartrate-resistant acid phosphatase is an iron containing glycoprotein that catalyzes the conversion of orthophosphoric monoester to alcohol and orthophosphate. TRAP is the most basic of the acid phosphatases and is the only form not inhibited by L+-tartrate. TRAP is a relatively minor lysosomal enzyme which may be activated in certain pathologies such as Hodgkin's disease and B- and T-cell leukemias. Receptor activator of NFκB ligand (RANKL) plays an essential role in osteoclast differentiation and activation by increasing the expression of protease osteoclast markers such as TRAP. TRAP has collagenolytic activity and plays a major role in ligament degradation.

**Concentration:**1mg/ml**Applications:**

WB(1:500-2000)

ELISA(1:5000-10000)

**Cross Reactive Species:**

Human

Mouse

Rat

Dog

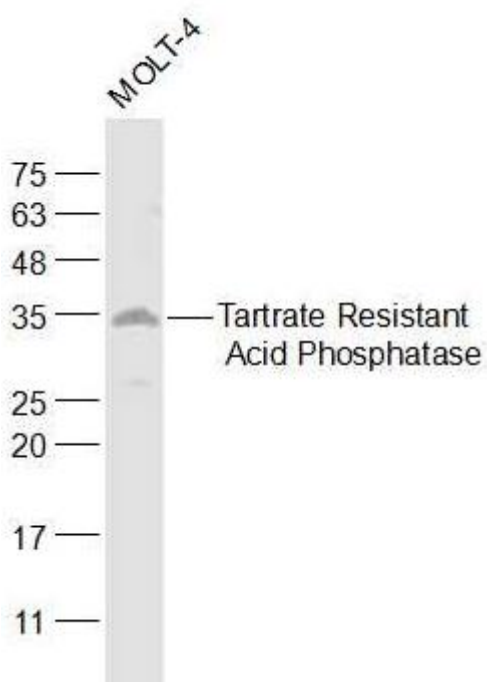
Pig

Horse

Rabbit

For research use only. Not intended for diagnostic or therapeutic use.

VALIDATION IMAGES



Sample:

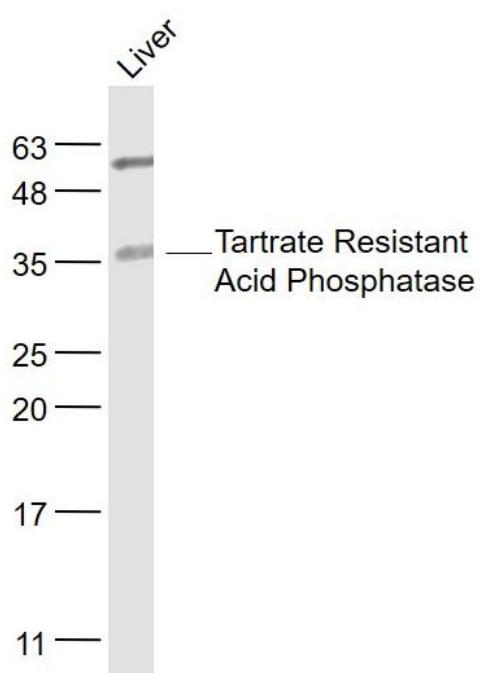
MOLT-4(Human) Cell Lysate at 30 ug

Primary: Anti-Tartrate Resistant Acid Phosphatase at 1/1000 dilution

Secondary: IRDye800CW Goat Anti-Rabbit IgG at 1/20000 dilution

Predicted band size: 34 kD

Observed band size: 35 kD



Sample:

Liyer(Mouse) Cell Lysate at 40 ug

Primary: Anti-Tartrate Resistant Acid Phosphatase at 1/300 dilution

Secondary: IRDye800CW Goat Anti-Rabbit IgG at 1/20000 dilution

Predicted band size: 34 kD

Observed band size: 34 kD